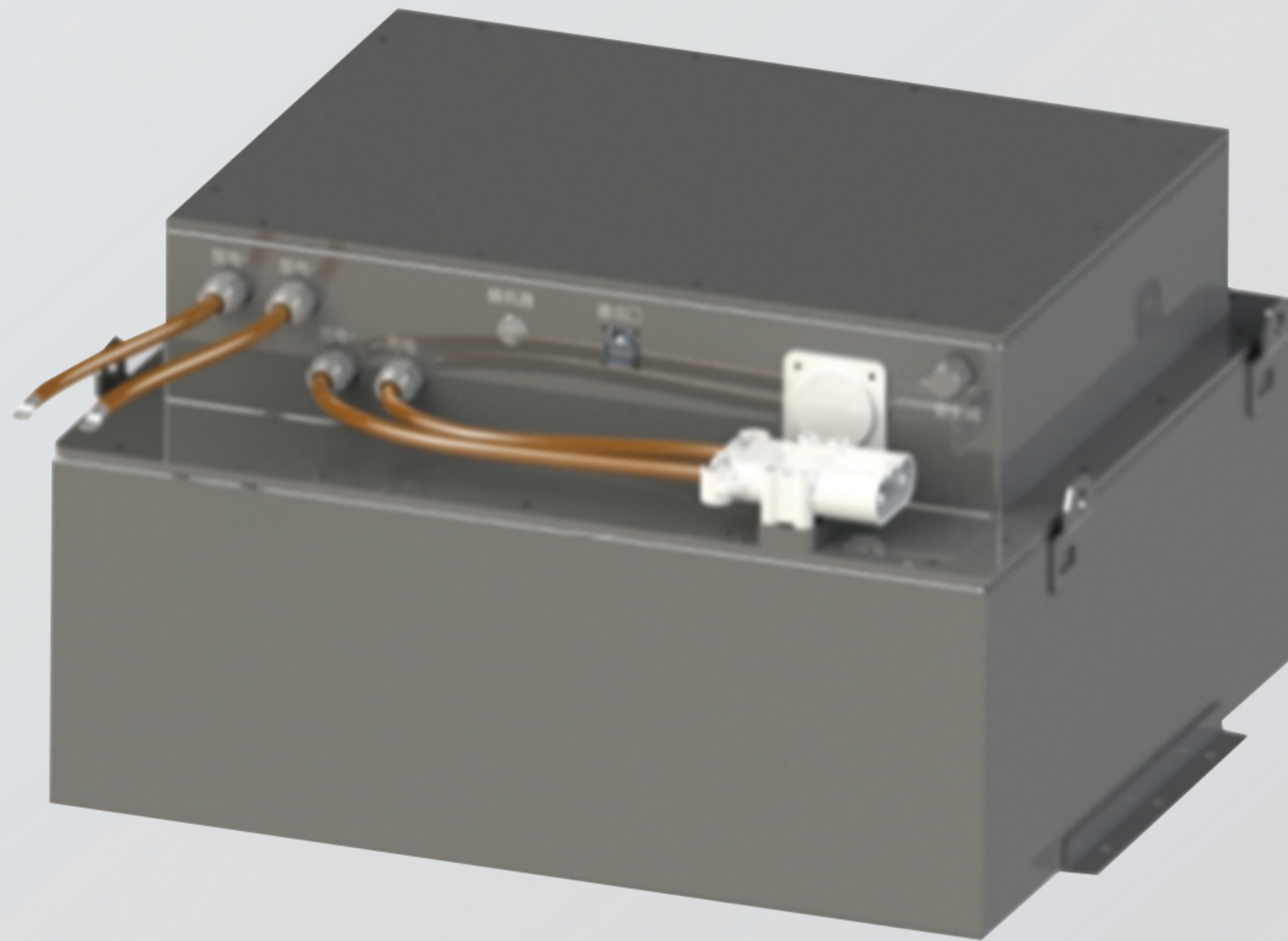


Forklift battery system

Applied to various electric forklifts



IP65 protection level

High level of waterproof and dustproof, can operate in various harsh working conditions.



Separate fire protection

Single large capacity battery cell, cluster-level energy balance management.

Parameters

Battery type	LFP	Maximum continuous discharge current (A)	206
Grouping method	1P24S	Protection level	IP65
Rated voltage (V)	76.8	Operating temperature range (°C)	-35~65
Rated capacity (Ah)	206	Voltage range (V)	60~87.6
Rated power (kWh)	15.8	Cooling method	Natural cooling
Weight (kg)	170±10	Recommended SOC operating range	5%~95%
Maximum continuous charging current(A)	206	Dimensions (mm)	690*600*397