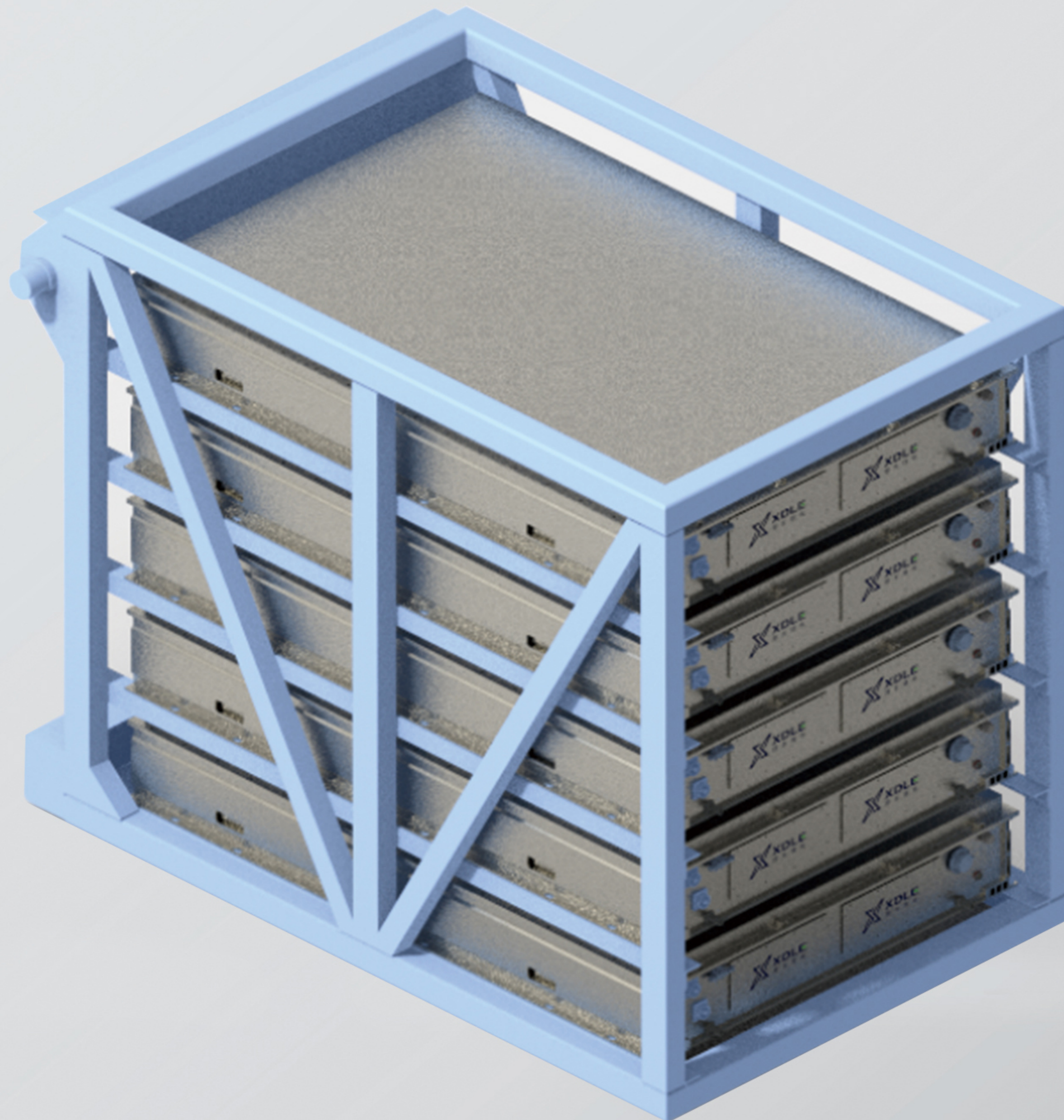


Mining Truck diesel to Electric Series

154T Mining Truck diesel to electricity - Battery System



Parameters

Name	Parameter
Battery cell	3.2V280Ah
Grouping method	1P13S(41.6V280Ah)
High-voltage battery cluster	1P416S(1331.2V280Ah)
High-voltage battery stack	4P416S(1331.2V280Ah*4)
Low-voltage battery cluster	1P208S (665.6V280Ah)
Low-voltage battery stack	3P208S(665.6V280Ah*3)
System power	1490.944kWh
Operating temperature range(°C)	-35~65